

# AT WORK

Issue 40  
July 2007



Cumbria Constabulary uses Topcon's GPT-7000i to capture evidence



Cumbria is a county (province) situated on the north west coast of England and encompasses, among other things, the famous Lake District National Park with the highest mountains and largest lakes in England. Cumbria is a large county combining rural villages and large cities. Cumbria Constabulary is responsible for policing the county and has one of England's largest geographical areas to cover.

The Collision Investigation Unit investigates around 200 serious fatal and serious road collisions as well as being involved in serious crime scenes and industrial accidents. "Utilizing Topcon's GPT-7000i and PI-3000 enables us to carry out our work in a quicker and efficient manner", says Sergeant Jon Skelton.

The role of Jon Skelton and his team is to collect evidence at collision scenes which later assist in reconstructing how the collision occurred. These reconstructions can then be used in any subsequent legal proceedings. He says, "After a serious collision the road is closed

*Continued on page 2*

# AT WORK

Cumbria Constabulary uses Topcon's GPT-7000i to capture evidence

'We have found that the GPT-7000i is easy and quick to set up, adaptable for our specialist use and reliable under all conditions.'

- Jon Skelton

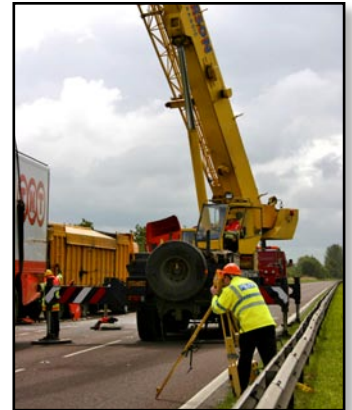
*Continued from page 1*

so that we are able to locate all the debris and identify any tire marks and other items of evidence. We are also interested in the state of the road and whether the weather conditions may have been contributory. A serious road collision is now treated as a crime scene. The area is photographed, video recorded and a detailed survey is carried out using the Topcon theodolite.

"Cumbria Constabulary has been using the GPT-7000i for about a year, having been the first police force to purchase the equipment. It has been shown that using the Topcon

equipment reduces the time it takes to survey the scene by up to 30%," Jon Skelton says. "This time savings is very important as we aim to keep roads closed for as short a time as possible whilst we carry out our investigations. Road closures have a financial impact on the economy of the country and using the Topcon equipment lessens that impact".

"We have found that the GPT-7000i is easy and quick to set up, adaptable for our specialist use and reliable under all conditions. Topcon have also provided us with excellent training, support and service."



To read other Topcon At Work stories go to [www.topconatwork.com](http://www.topconatwork.com)

## Topcon's GPT-7000i

**Capture reality –  
don't just measure it!**

With its integrated digital camera technology, the Topcon GPT-7000i imaging total station makes your field data come alive. Captured job site photos are incorporated into your measurement data, or use the onboard imaging technology to superimpose design points or stakeout points. By adding optional digital imaging software you can combine multiple job site photos and create 3D models and point clouds! Never miss a required shot again!

